



# ISB&M

## College of Commerce



Affiliated to Savitribai Phule Pune University



### Placement Highlights

Highest Package: **10 Lacs CTC**

Average Package: **4.6 Lacs CTC**

**ISB&M COC BULLETIN 2024**

# Ranking

**1<sup>st</sup> in BBA Colleges in Pune**

(Source : GHRDC BBA College Survey 2023)

---

**2<sup>nd</sup> in BBA Colleges in Maharashtra**

(Source : GHRDC BBA College Survey 2023)

---

**2<sup>nd</sup> in Western Region in India**

(Source : GHRDC BBA College Survey 2023)

---

**16<sup>th</sup> in Top Private Bba Institute In India**

(Source : By Times B-Schools Survey 2022)



# Highlights

**Exceptionally Skilled and Achieved Leadership and Faculty**

---

**Engaging Guest Lectures, Seminars, and Workshops Conducted by Distinguished Corporate Leaders**

---

**Robust Network of Accomplished Alumni**

---

**Promotion of Diversity within the Campus Community**

---

**Comprehensive Preparation for Varied Professional Roles**

---

**Addressing Managerial Challenges Unique to the 21<sup>st</sup> Century**

---

**Extensive Interface between Students and Industry Professionals**

---

**Supplementary Courses Beyond the University Framework**

## **ISB&M COLLEGE OF COMMERCE**

ISB&M College of Commerce, affiliated to Savitribai Phule Pune University, offers 3-year full-time undergraduate courses in following disciplines

- ➔ **BBA**
- ➔ **BBA (Computer Application)**
- ➔ **BBA + Media**
- ➔ **BBA (Computer Application) + Media**

The program supported by a highly qualified faculty and robust academic infrastructure, ISB&M fosters a culture of openness, creativity, and professional excellence. Students are encouraged to explore and rediscover themselves through a holistic approach, learning to excel in demanding schedules and inspiring environments.



# International Academic collaboration With California Polytechnic State University, Pomona, California - USA



## 1. Research & Faculty Exchange

USA Faculty teaching in ISB&M & ISB&M faculty in USA

Faculty working on joints research project and Paper publication

## 2. Programmes Sharing & Students Exchange

Joint UG & PG programme

ISB&M College of Commerce Students can do a Semester or a shorter duration module in California Polytechnic State University, Pomona, USA

## 3. Executive Education

Certificate Programme

Short executive Development programme both online & offline





# Admission Process

## Eligibility

The candidate must have passed - the 12<sup>th</sup> (HSC) with a minimum of 40% (for General Category) / 35% (for Reserved Category) from any stream with English as one of the subjects from a recognized board.



3-Years Diploma course ( after SSC/10<sup>th</sup> Std) of Board of Technical Educational Conducted by Govt. of Maharashtra or its equivalent MCVC (Minimum Competency Vocational Course)



All candidates need to pass an online Personal Interview with ISB&M College of Commerce and provide their MAH-CET scorecard



## How to Apply

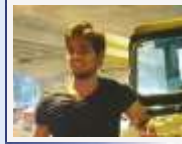
The application form can be accessed at [www.isbmcoc.org](http://www.isbmcoc.org) and should be submitted online along with the application fee, payable through Debit/Credit card or net banking.

(Application Fee is non-refundable)

# Alumni Across the Globe



Abhishek Kaulgud  
2009-12  
**Head HRBP**  
**Livspace India**  
Bengaluru



Keshav Pandey  
2010-13  
**Group Manager**  
**Amazon**  
Pune



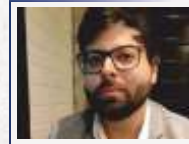
Shraddha Hurne  
2010-13  
**Credit and Liquidity**  
**Risk Manager**  
**Alpiq**, Switzerland



Shery Nair  
2010-13  
**Associate Vice President**  
**Kotak Mahindra Bank**  
Surat



Rajat Gulati  
2010-13  
**Assistant VP-**  
**Swiss Re**, Bengaluru



Ayush Tandon  
2012-15  
**Data Scientist**  
**Capgemini**  
Pune



Rahul Sharma  
2014-17  
**Manager**  
**Trident Group India**  
Ludhiana



Pratiksha Gharat  
2014-17  
**Sr. Analyst**  
**GEP Worldwide**  
Navi Mumbai



Swapnil Sehgal  
2015-18  
**Senior Unit Manager**  
**Bajaj Finserv**  
Pune



Shivam Srivastava  
2015-18  
**Unit Manager(HR)**  
**Bajaj Finserve**  
Pune



Nisha Choudhary  
2015-18  
**HR Recruiter**  
**Credence Global Solutions**  
Pune



Astha Shrivastava  
2016-19  
**Consultant**  
**KPMG**  
Pune

# Alumni Across the Globe



Sohail Khan  
2016-19  
**Consultant**  
**Wipro Limited**  
Gurugram



Ashish Singh  
2016-19  
**Sr. Executive**  
**Motilal Oswal**  
Pune



Ayayush Telgote  
2016-19  
**Business Analyst**  
**Infosys**  
Pune



Chayan Gogna  
2017-20  
**Manager**  
**Marnics Mobile**  
Canada



Nishant Shekhar  
2016-19  
**Consulting Analyst**  
**Accenture**  
Pune



Sweta Ray  
2016-19  
**Tax Consultant**  
**Deloitte**  
Hyderabad



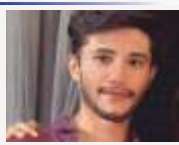
Sayantiak Sikdar  
2016-19  
**Consultant**  
**Deloitte**  
Pune



Meet Shah  
2016-19  
**Account Manager**  
**Kaseya**  
Ireland



Ankit Gour  
2016-19  
**Data Analyst**  
**South Dublin County**  
**Council, Dublin**



Sumukh Mishra  
2018-21  
**Analyst**  
**eClerx**  
Pune



Kiran Sukkala  
2018-21  
**DCX Consultant**  
**Capgemini**  
Pune



Sanjali Jain  
2019-22  
**Analyst**  
**IBM**  
Pune

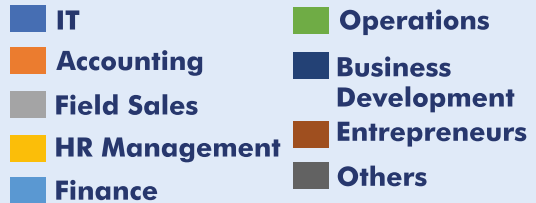
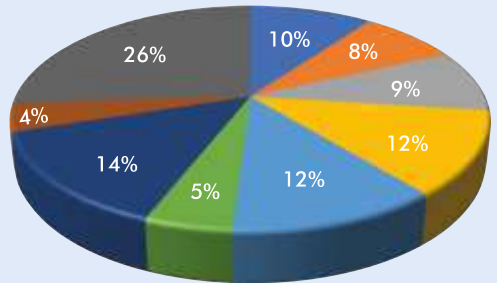
# Placement Highlights

**Highest Package 10 LPA**

**Average Package 4.6 LPA**

## Students Placed Batch : 2020-23

<b>IT</b>	<b>: 10 %</b>
<b>Accounting</b>	<b>: 8 %</b>
<b>Field Sales</b>	<b>: 9 %</b>
<b>HR Management</b>	<b>: 12 %</b>
<b>Finance</b>	<b>: 12 %</b>
<b>Operations</b>	<b>: 5 %</b>
<b>Business Development</b>	<b>: 14 %</b>
<b>Entrepreneurs</b>	<b>: 4 %</b>
<b>Others</b>	<b>: 26 %</b>



**ISB&M is not just a destination ; it's a colourful journey of growth and discovery.**

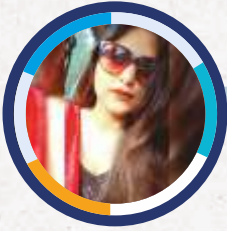
<p> We provide good Academic Infrastructure &amp; labs for great learning &amp; development</p>	<p> 24 hours Computer Lab &amp; Digital Library facility (over 10,000 Journals)</p>
<p> Wi-Fi enabled Campus, Broadband Speed : 110mbps</p>	<p> 18970 Books</p>
<p> 135 Magazines</p>	<p> 22 Newspaper</p>
<p> Gymnasium &amp; Spiritual Centre</p>	<p> Doctor's and Sick Room (24*7)</p>



# Our Prominent Recruiters



# Our Alumni Testimonial



Shailja Singh  
(2017-2020)

**Product Manager**  
**HDFC Bank**

“

ISBM does and will always hold a special place, coupled with a lot of different experiences, meeting great people and having beautiful conversations is what differentiates the life at ISBM. This college has taught valuable lessons on the importance of team work, the joy.

”



Abhijit Bramhne  
(2009-2012)

**Manager**  
**Tata Communications**  
Pune

“

I've learnt a lot at ISB&M COC. There is a huge space for freedom, but finally it is the way you take it. The hostel life was fun too ! I developed myself being adaptable. Teachers are very supportive and helping.

”



Ishan Nayak  
(2013-2016)

**Strategic Account Planner**  
**Dun & Bradstreet**  
Mumbai

“

When something is important enough, you do it even if the odds are not in your favour” that has been my ideology in life and also for my journey at ISB&M. The faculty here at ISB&M comes with their share of abundant and relevant experience, which gives you an insight on insider perspective. The college gives us numerous opportunities in terms of internship, extra-curricular and leadership positions, that develops a sense of responsibility, accountability and the right attitude which makes the transition from student life to corporate life facile.

”

# Life @ ISB&M COC





[www.isbmcoc.org](http://www.isbmcoc.org)



**ISB&M College of Commerce**  
S.No 44/1, 44/1/2 ,  
Nande Village, Ahead of Pashan Sus Road,  
Pune - 412115

**7420018855**  
**020 35012008**  
[admissionscoc@isbm.ac.in](mailto:admissionscoc@isbm.ac.in)